

# The EES...

Entry/Exit System (EES)  
Automated Self-Service System

## ...provides for

- automatic registration of non-EU nationals each time they cross a Schengen external border
- gradual reduction in waiting times at passport control
- simplification and automation of border procedures

## ...applies\* to

- non-EU nationals travelling for a short stay of up to 90 days within a 180-day period
- visa-required travellers  
→ visa-exempt travellers

\* Some exceptions apply.

## ...collects your

- full name, date of birth, nationalities, sex
- travel document
- facial image and/or fingerprints



## ...records the

- date and place of entry into and exit from a European country using the EES
- refusals of entry, if this is the case

Entry  
Exit  
System

**1** Where available, travellers with a biometric passport can present their travel documents at self-service systems. Border guards will help and/or oversee the process



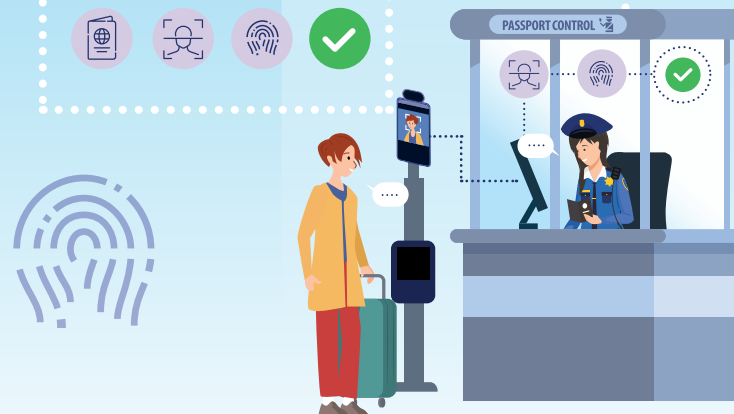
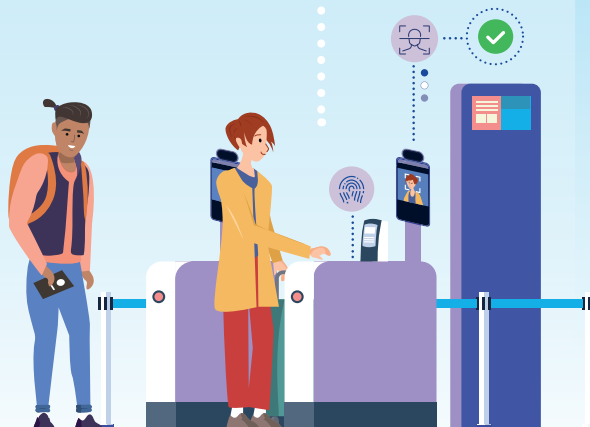
**2** The traveller must provide their documents and biometric data (facial images and fingerprints) at the self-service system



**3** A border guard will verify the information received through self-service system, ask questions if needed, and then authorise or refuse entry to the traveller, which will be recorded in the system



**4** The traveller benefits from a smoother and more efficient border crossing process



#TravelToEurope

Scan the QR code to learn more ▶

